

Installing ICBz magnifier cloth mesh

Tools required for mounting (not included)

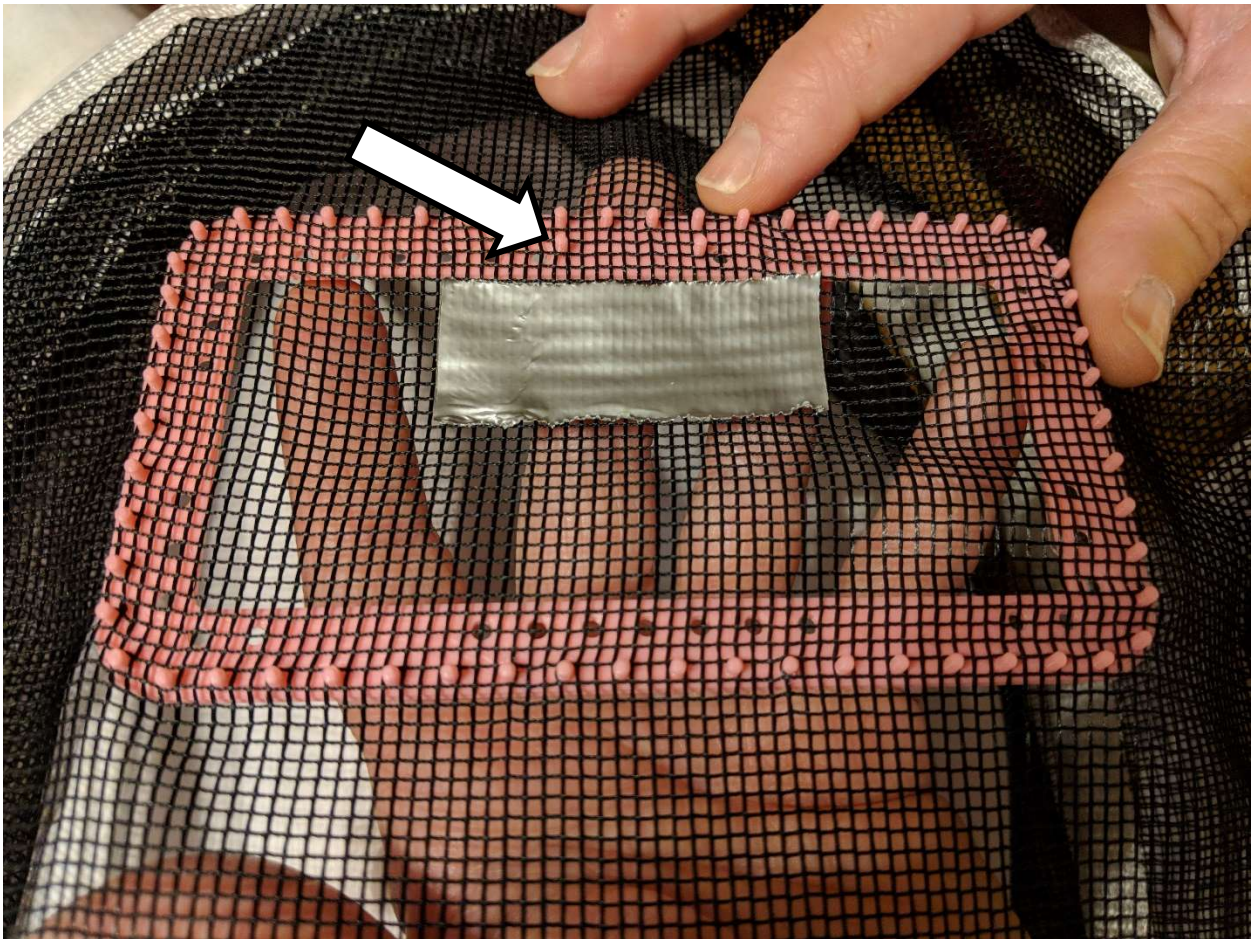
- Duct tape
- Needle and thread
- Sharp knife
- Super glue

Step 1. With a piece of tape, mark the top edge of your eyes.



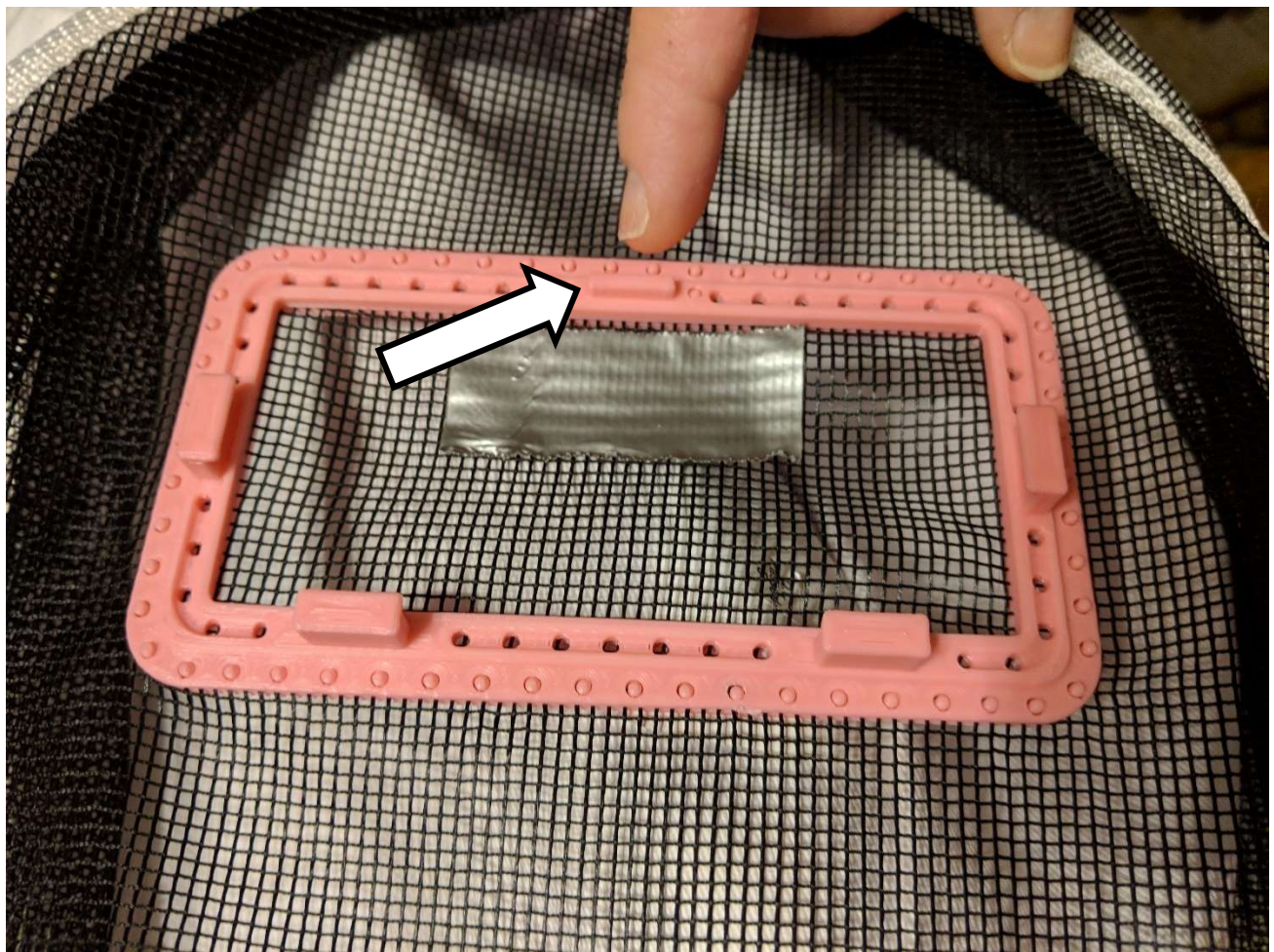
Step 2. Installing the back plate: The plate must be installed with the two pins up.
(**ICBz** on the back side should be at the top.)

1. Line up with the tape centered on the veil.
2. Take your time!

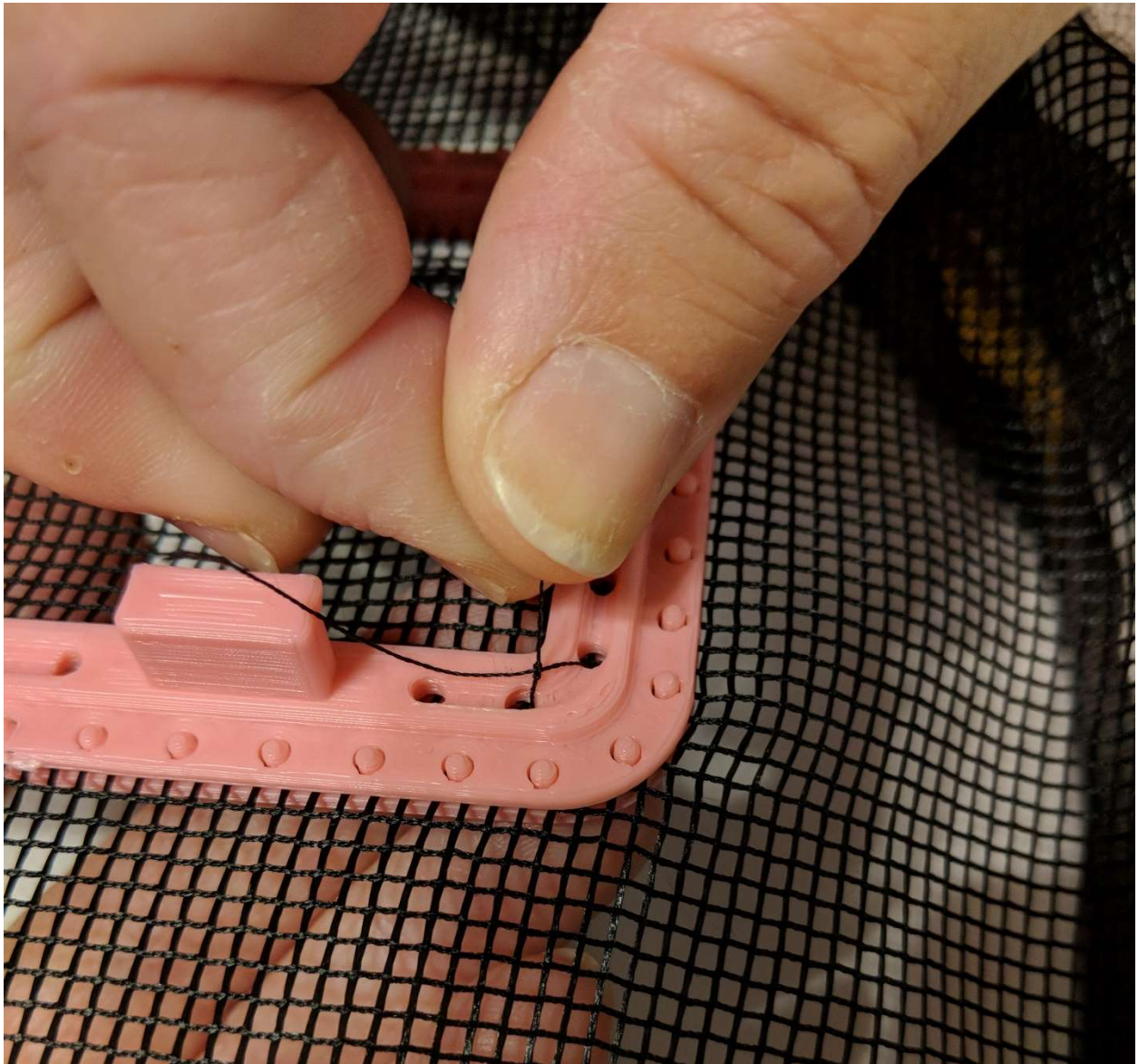


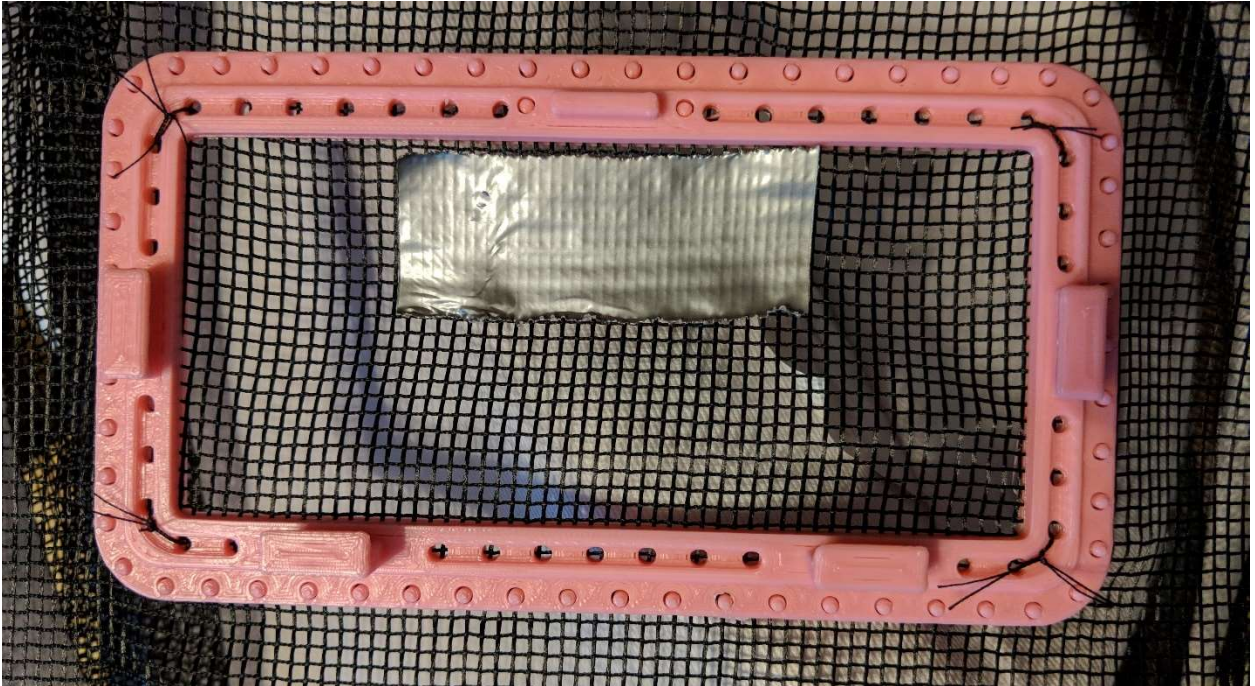
Step 3. Snap the front to the back.

This TAB is on the TOP of the hood.



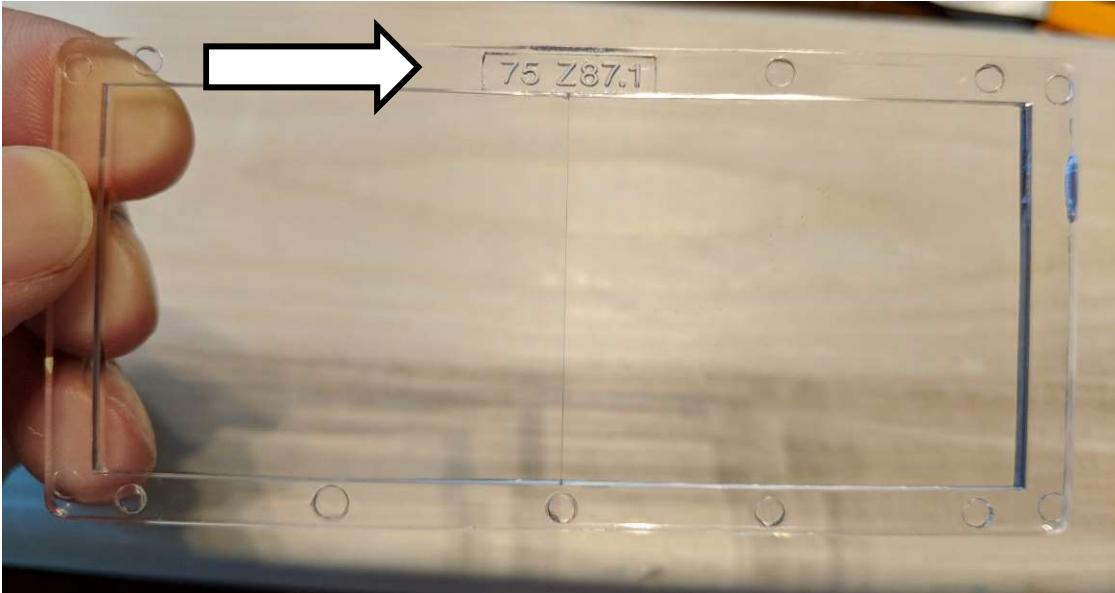
Step 4. Put a stitch in each of the four corners and tie off.



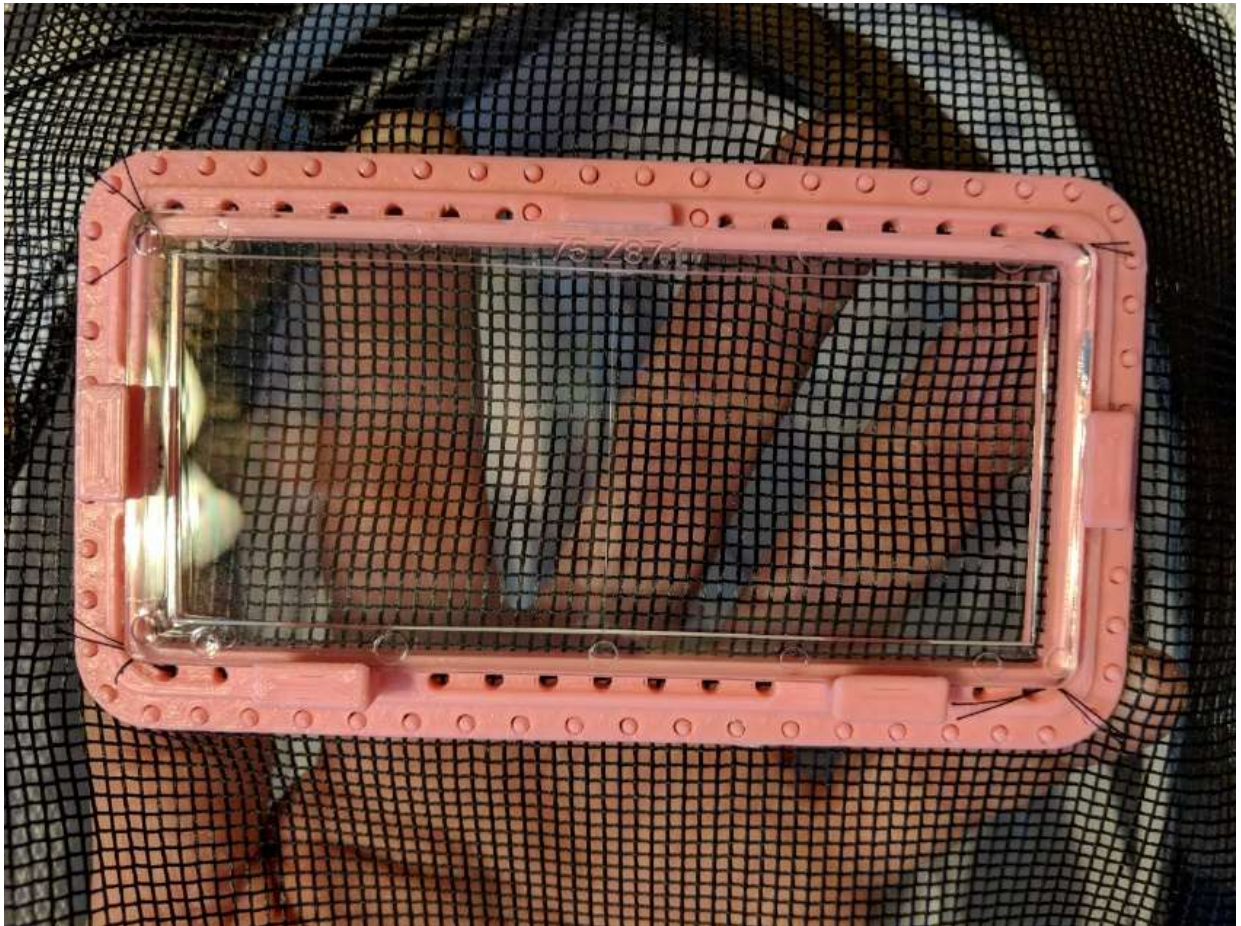


Step 5. Remove the tape.

Step 6. The lens is installed with the glass number on the top.



Step 7. Insert lens under the tabs on left and right sides. Slide all the way down until it snaps into place.



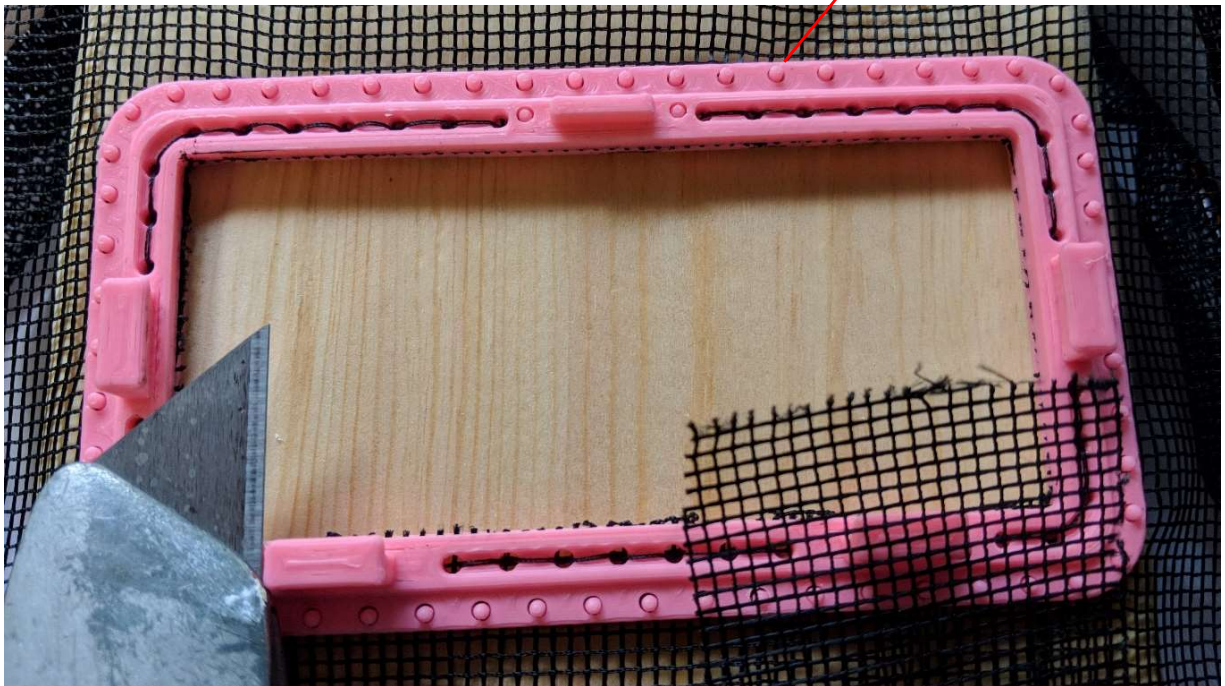


Step 8. **Do Not Cut Window Out!**

Wear your new magnifiers out to your apiary for a test to see if you need to adjust the location of the lens. If so, go back to step 1.

Step 9. It works! Remove the magnifying lens. Sew or super glue the magnifier holder into place before cutting out the screen.

Super glue tops of pins



Miss Bee Haven MN

Better tools for a better beekeeping experience!



MissBeeHavenMN.com

MissBeeHavenMN@gmail.com