

# Installing ICBz magnifier on wire screen

## Tools required for mounting (not included)

- Safety glasses
- Duct tape
- Needle and thread
- Rotary cutting tool to cut wire mesh

Step 1. Center on the top of the veil. The small tab is up.



Step 2. The **BACK PLATE IS NOT USED!**

(**ICBz** on the back side should be at the top.)

1. Take your time!
2. Clamp the veil out of your way
3. Sew the front mounting plate on to veil (option is to mount on the side of veil)



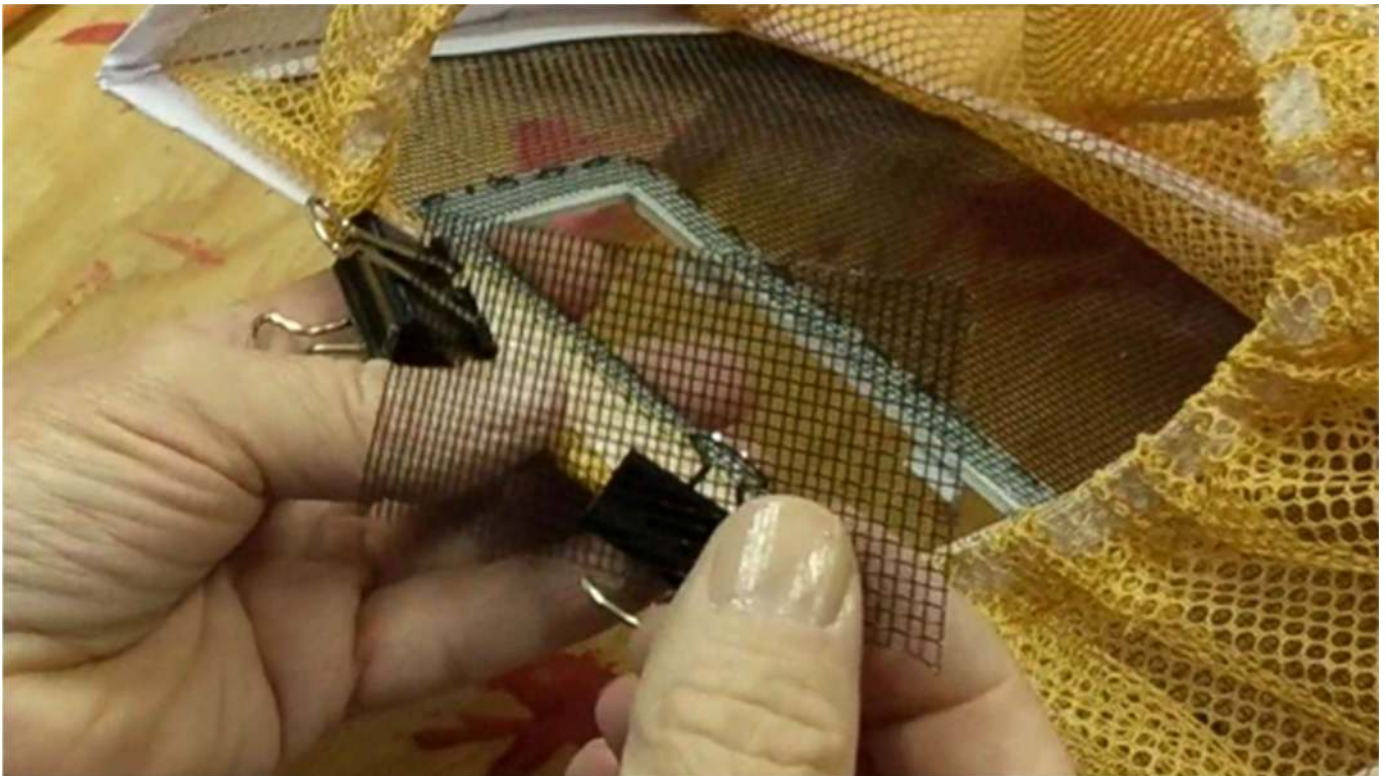


Step 3. Cut the screen. A rotary cutting tool works the best.  
**Wear your safety glasses!**



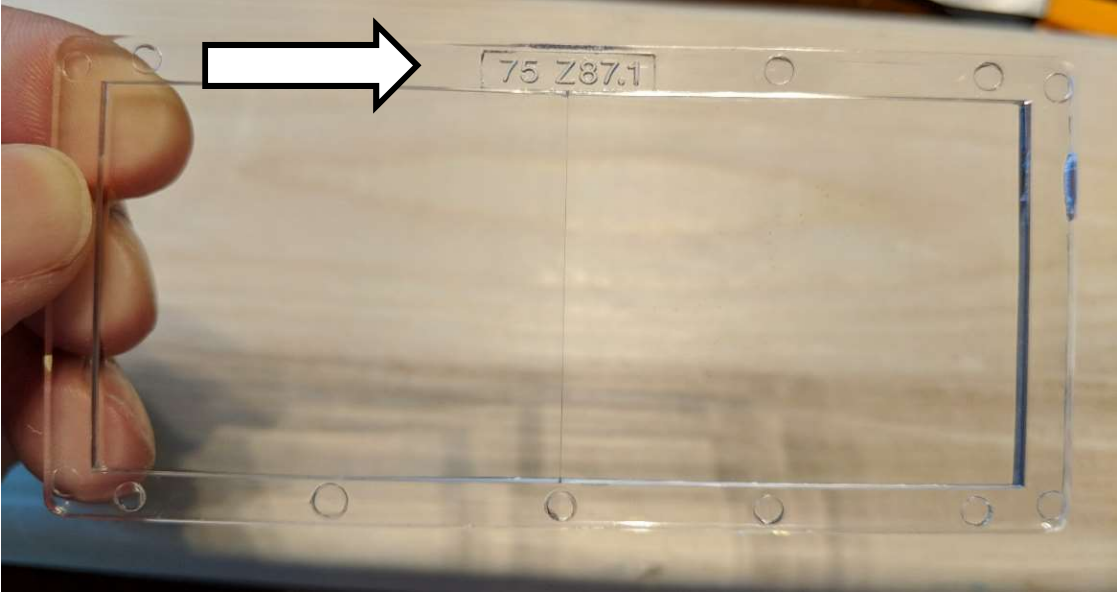


Thin cutout wheel.



The screen doesn't get distorted with rotary cutoff tool.

Step 4. The lens is installed with the glass number on the top.



Step 5. Insert lens under the tabs on left and right sides. Slide all the way down until it snaps into place.

## Miss Bee Haven MN

Better tools for a better beekeeping experience!

[MissBeeHavenMN.com](http://MissBeeHavenMN.com)   [MissBeeHavenMN@gmail.com](mailto:MissBeeHavenMN@gmail.com)